

CHAMELEON

HERBIE HANCOCK

INTRO

4 Gm7 C7 Gm7 C7

Gm7 C7 Gm7 C7

HEAD (4X'S) Gm7 C7 Gm7 C7

BRIDGE Gm7 C7 Gm7 C7

(SOLO)

INTERLUDE

Gm7 C7 Gm7 C7

SOLO (6X'S) Gm7 C7 Gm7 C7

(SOLO)

CHAMELEON (PG. 2)

INTERLUDE

Gm7

C7

Gm7

C7



VAMP

(4X'S)

Gm7

C7

Gm7

C7



(CLAVINET IN)

Gm7

C7

Gm7

C7



BREAKDOWN



8



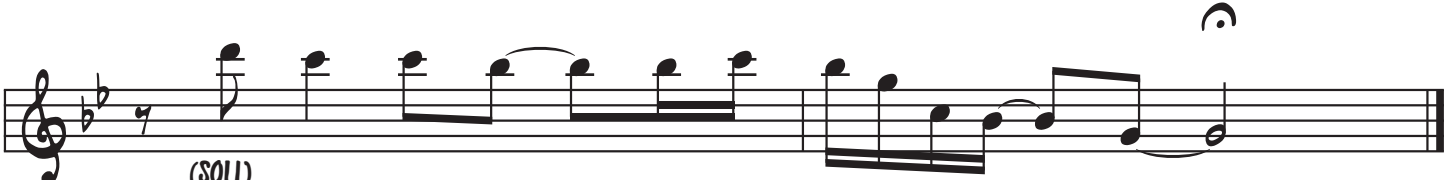
BRIDGE

Gm7

C7

Gm7

C7



(SOLO)