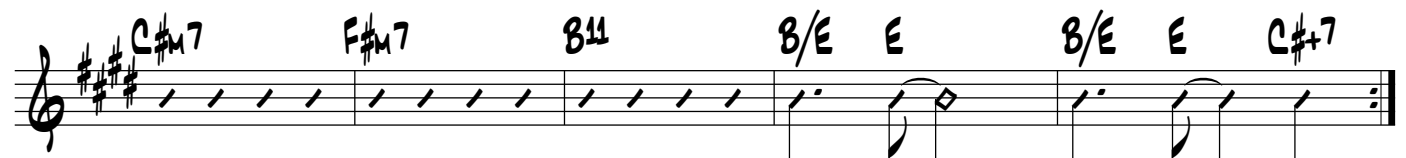
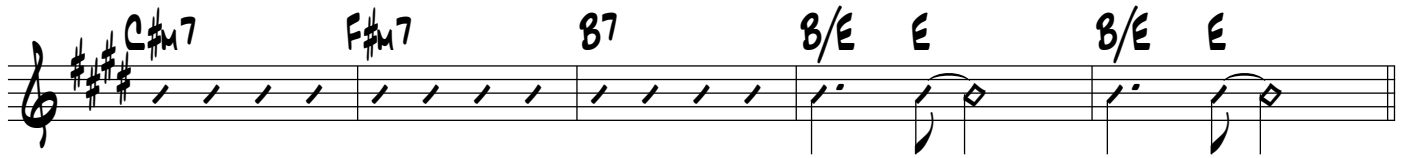
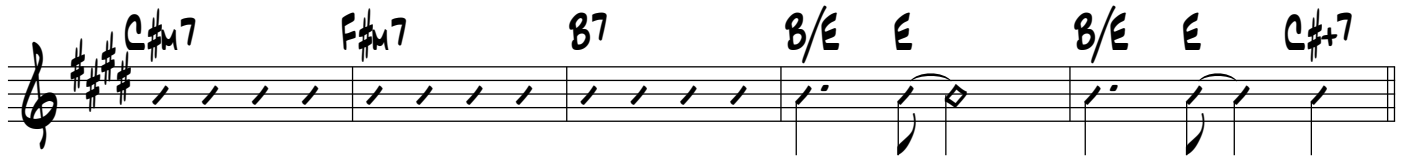
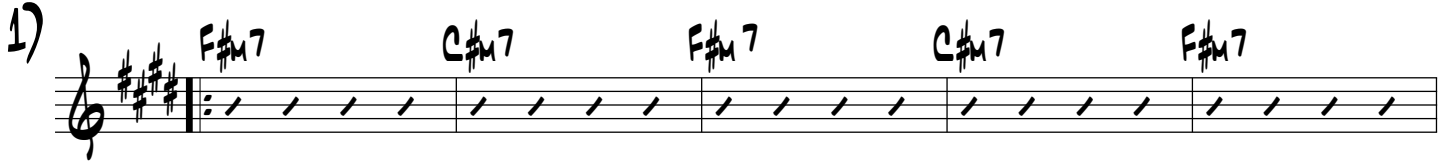


# AND I LOVE HER



VAMP:

Handwritten musical notation for a VAMP section. The staff is in treble clef with a key signature of three sharps (F#, C#, G#). The notation consists of four measures, each containing a slash (/) indicating a rest. Above the staff, the chords F#m7, C#m7, F#m7 B7, E, and C#+7 are written above the first, second, third, fourth, and fifth measures respectively. The notation ends with a double bar line and repeat dots.

ON CUE:

Handwritten musical notation for an ON CUE section. The staff is in treble clef with a key signature of three sharps (F#, C#, G#). The notation consists of four measures, each containing a slash (/) indicating a rest. Above the staff, the chords F#m7, C#m7, F#m7 B7, E, and C#+7 are written above the first, second, third, fourth, and fifth measures respectively. The notation ends with a double bar line and repeat dots.